

The Mother Child Project

Corner House, Inc. of Emporia, KS

*A special
place for
Mothers in
Recovery*



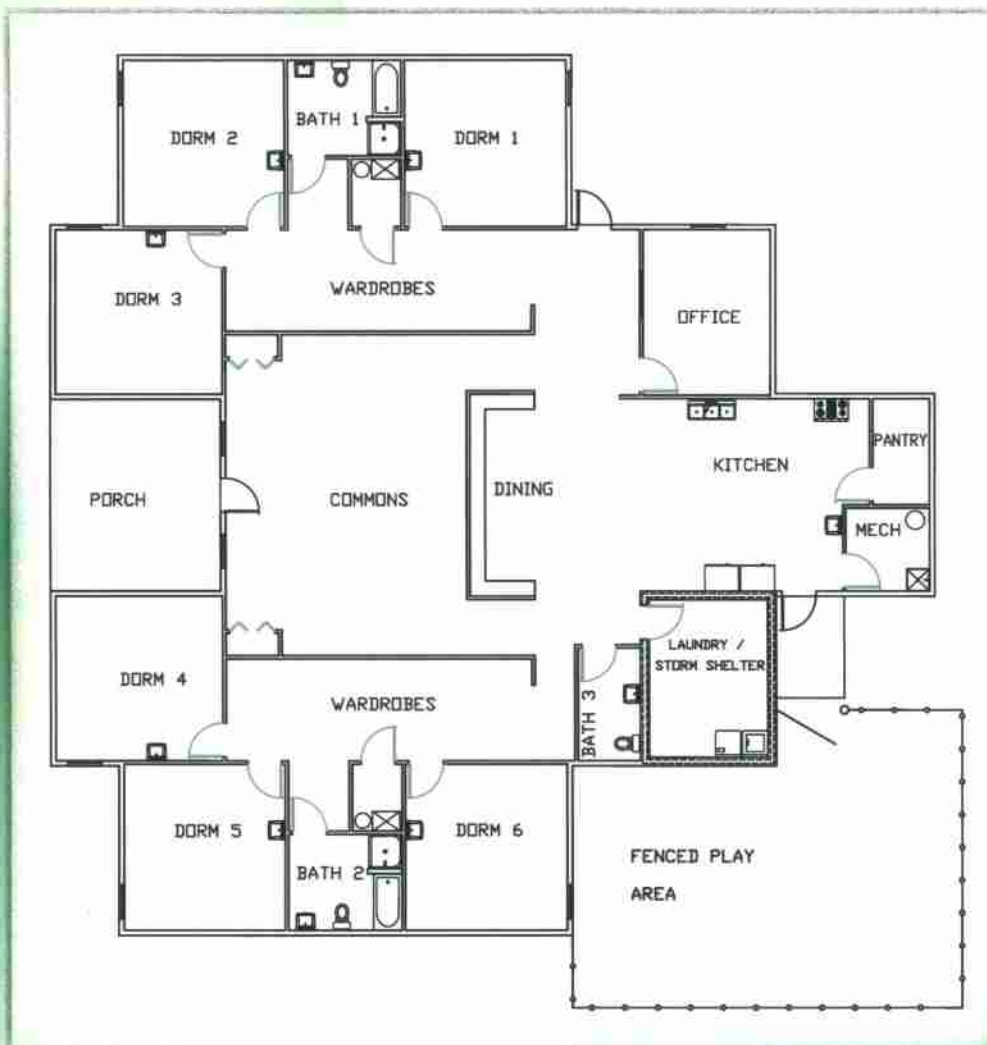
418 Market Street • Emporia, KS 66801
620-342-3015

Dear friends,

Mothers with children present a unique and special challenge in the world of recovery. Research and experience tells us that women receive the most benefit from alcohol and drug treatment programs that provide comprehensive services for meeting their basic needs. Women need access to educational opportunities, parent training, family therapy, childcare, social support and family planning services.

Corner House, Inc. has committed itself to providing the services and facilities to address this special segment of our community. We are calling this initiative the MOTHER & CHILD PROJECT. This project is designed to provide needed transitional housing, treatment and recovery services, and other valuable support services for women and their dependent children.

The existing resources are small in comparison to the number of mothers in need of these precious services. Out of nearly 400 alcohol and drug treatment providers in the state, only eight (8) programs exist to provide residential services to women. None of these programs are located in the 18 counties in east central Kansas. Unfortunately, many of these eight programs do not accept the mother and her dependent child. The mother then must make a decision to leave her child with a relative or friend while she seeks treatment. This dynamic prevents many mothers from engaging in treatment.



Corner House, Inc. seeks your help in addressing this important community issue. Emporia, Lyon County and our region need to help mothers by providing necessary supports, access to services and skills training in order for mothers to care for their children.

With your help, we can and we will help mothers recover!

Sincerely,
Sarah M. Riley-Hansen
Executive Director
620-342-3015
sarahr@cornerhouseinc.org

The New Facility

The homes north of our current site (418 Market Street) will be demolished and the new facility built upon the site.

The proposed facility includes six bedrooms that allow for a mother and a child to remain together during her care and treatment.

The 4,500 square foot facility also includes a commons area, a kitchen, dining room and fenced patio and play area on the exterior.

This secure environment will provide comfortable accommodations and adequate space for mothers and their children.

The location provides close proximity to other off-site services such as health care, family planning services, employment skills training, parent education, and more!

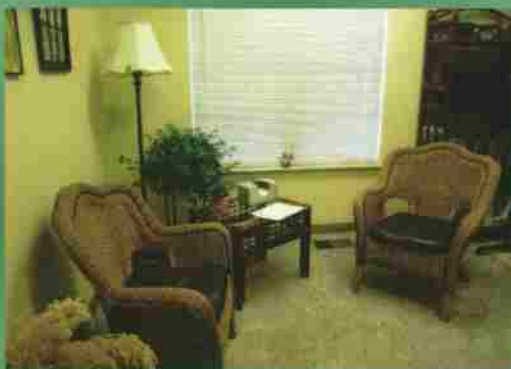


Who Will Benefit From These Services?

- There are more than 60,000 people living in Corner House's primary service area (Lyon, Osage, Chase, Greenwood, Coffey, Morris, and Wabaunsee counties). Of these, 34,200 or 57% are women.
- It is estimated that over the first five (5) years of operation the facility will serve more than 550 women and children.
- In fiscal year 2007, 118 women in Corner House's primary service area needed inpatient substance abuse treatment, but were unable to secure those services in their community.

Estimated Budget for the Mother-Child Project

Construction	\$529,000
Demolition and Site Development	\$70,000
Furnishing and Equipment	\$81,000
Professional Fees	\$120,000
Total	\$800,000



Corner House, Inc. A Brief History

Corner House, Inc. is in its 35th year of preventing substance abuse, treating addiction, and celebrating recovery. The agency has treated more than 3,700 individuals over its many years of service. This number does not include the countless number of family members who participated in a client's treatment; nor does it include the number of family friends, employers and neighbors who experienced the residual effect of the client's sobriety and recovery.

Corner House provides a wide range of wellness services including substance abuse assessment and treatment, counseling, Employee Assistance Group services and outreach and training. Through the years, our services and programs have grown to meet the needs of Emporia and the surrounding area. Corner House is ever mindful of research-based practice and of community need. With these constructs in mind, we seek to provide a continuum of care in which an individual or family may access the appropriate service for the duration of demonstrated need.

Corner House, Inc. is a 501 (c) (3) non profit agency.
Our Federal tax identification is 48-0824375. All gifts are tax deductible.